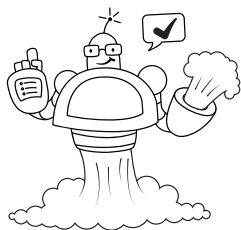


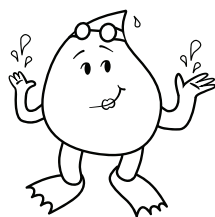
Name: \_\_\_\_\_

# Scrub Club® Character Identification

Write the names of the heroes.



\_\_\_\_\_



\_\_\_\_\_



\_\_\_\_\_



\_\_\_\_\_

## Carry

Water gushes onto your skin and makes it slippery. That's harder for the germs to hold on to.

## Slick

Soap helps make your skin even more slippery, like an ice rink for germs with no skates.

## Patience

Scrubbing your hands moves the soapy water all around, helping to scrape and yank the scummy germs loose.

## Buff

After rinsing, make sure to dry your hands really well with a towel or air dryer.



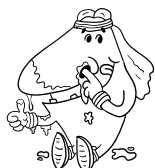
[www.scrubclub.org](http://www.scrubclub.org) | 1.800.673.8010 | [scrubclub@nsf.org](mailto:scrubclub@nsf.org)

© 2020 NSF International. The Scrub Club™ characters and Scrub Club® are trademarks of NSF International.

Name: \_\_\_\_\_

# Scrub Club® Character Identification

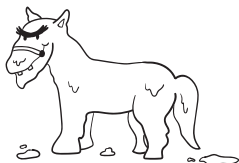
Write the names of the villains.



\_\_\_\_\_



\_\_\_\_\_



\_\_\_\_\_



\_\_\_\_\_



\_\_\_\_\_



\_\_\_\_\_

## Mr. Crampy Pants

is **Campylobacter**

An old crabby germ with no patience for cooking food or handwashing who is always complaining.

## Coal Eye Jake

is **Bacteria/E. Coli**

Coal Eye Jake drags around his scumbag spreading germs wherever he goes.

## Stinky Sam

is **Salmonella**

Stinky Sam doesn't like cooked food and never washes anything. He rides Shiggy who always agrees with him.

## Wheezy Spew

is **Influenza (the Flu)**

Wheezy Spew is a snotty drippy mess who doesn't move fast, but her nose is constantly running.

## Sticky Nora

is **Norovirus**

Nora wants to hug and kiss everyone, sharing her precious germs with every surface she touches.

## Shiggy the Horse

is **Shigella**

Shiggy loves to make a mess with his best buddy, Stinky Sam.



[www.scrubclub.org](http://www.scrubclub.org) | 1.800.673.8010 | [scrubclub@nsf.org](mailto:scrubclub@nsf.org)

© 2020 NSF International. The Scrub Club™ characters and Scrub Club® are trademarks of NSF International.